

# TECTUS<sup>®</sup> Glass

**Flush glass doors in the limelight**

Minimalist, Elegant, Transparent



# TECTUS® GLASS – FLUSH GLASS DOORS IN THE LIMELIGHT

With the hinge system TECTUS Glass, SIMONSWERK has developed an aesthetic and functional solution for the holistic, flush-fitting installation of glass doors. Glass door leaf, frame, hinge and latching system lie in one plane – the best prerequisite for minimalist design in combination with maximum transparency.

## MINIMALIST, ELEGANT, TRANSPARENT

An interior room concept with generous glazing and a need for transparency often goes hand in hand with the desire for a clear, unobtrusive design. The hardware system TECTUS Glass gives the glass door unprecedented light and transparency. The flush surface of the glass door leaf, frame as well as hinge and latching system creates a fascinating filigree with aesthetic technical hardware details – hardware systems that have been in the foreground until now disappear and a clear view with maximum transparency opens up. The hinge system TECTUS Glass, the contactless magnetic closure and matched handle variants result in a holistic hardware solution. Reducing the visible elements and increasing the ease of use supports contemporary interior design concepts now also for heavy-duty doors up to 80 kg.



# HOLISTIC HARDWARE COMPONENTS

SIMONSWERK offers a solution for glass doors, which not only includes the hinge system TECTUS Glass, but also a magnetic closure and handle variants. The special feature: The entire assembly requires no glass processing.



## TECTUS® Glass

for glass doors up to 80 kg

Model versions

- › up to 60 kg – TEG 310 2D 60
- › up to 80 kg – TEG 310 2D 80

Finishes

- › Satin Stainless Steel
- › Traffic White (similar to RAL 9016)
- › Matte Deep Black (similar to RAL 9005)
- › Matte Pure Grey (NCS S 8000-N)
- › Satin Chrome Look (F1)
- › other finishes available upon request



**Handle**  
KC 170

**Magnetic Plate**  
KC 50/G

**Closing Magnet**  
KC 50

## MAGNETIC CLOSURE AND HANDLE

The magnetic closure, consisting of the closing magnet KC 50 for the frame and the magnetic plate KC 50/G for the glass door, forms an aesthetic and elegant unit with the handle KC 170, which is adapted to the system - applicable for timber, steel and aluminium frames.



# TECTUS® GLASS HINGE SYSTEM – DETAILED TECHNICAL PRECISION

Reduced hinge dimensions create maximum transparency in glass doors. It's not only the exceptionally elegant dimensions of the TECTUS Glass hinge system that make it so impressive, it's the fact that they also offer a secure load capacity of up to 80 kg, which is opening up new solutions for glass doors – particularly when it comes to heavy-duty construction.

---

## PRODUCT FEATURES

- › glass manipulation is not necessary
  - › glass door without specific door opening direction – variable assembly options
  - › quick and easy installation
- 

## MAXIMUM LOAD CAPACITY AT ITS BEST

Who says elegance and high load capacity have to be mutually exclusive? The TECTUS Glass hinge system is capable of supporting up to 80 kg. This corresponds to a glass door with dimensions of approx. 10 x 1000 x 2700 mm using tempered safety glass (ESG) measuring 8 or 10 mm thick.

The solid stainless steel hinge body supports the door leaf and ensures the glass pane sits perfectly and securely in place. Adjustment of the correct door position is easy thanks to the flexible clamping mechanism. It is then fastened securely in place by tightening the clamping screws.

The TECTUS Glass hinge system is available in model versions TEG 310 2D 60 for a load capacity of up to 60 kg and TEG 310 2D 80 for up to 80 kg (higher load capacity is offered through the use of special material components). Not only are the two hinge versions completely identical in terms of size, dimensions and appearance, but they are also installed in exactly the same way.



TECTUS Glass hinge system – closed

### **TECTUS® Glass**

TEG 310 2D 60 = 60 kg

TEG 310 2D 80 = 80 kg



**NEW**

load capacity  
of up to 80 kg

TECTUS Glass hinge system – open



**THE CLOSING MAGNET**

KC 50

**THE MAGNETIC PLATE**

KC 50/G

**THE HANDLE**

KC 170

# KEEP CLOSE – THE MAGNETIC LATCHING SYSTEM

## REVOLUTIONARY TECHNOLOGY – TIMELESS ELEGANCE

Keep Close – the innovative, zero-current magnetic closure from SIMONSWERK – offers an intelligent alternative to a conventional latching mechanism. Comprising a closing magnet, magnetic plate, and a convenient handle design, this impressive system with its minimalist design also affords exceptional ease of use. The KC 50 closing magnet in the frame functions contactless and does not make a sound. Its counterpart in the form of the KC 50/G magnetic plate is bonded to the main closing edge of the glass door, where it goes virtually unnoticed.

## SIMPLE POSITIONING

This comprehensive hardware solution is rounded off perfectly with handle options designed to complement the entire system. The KC 170 handle offers the ideal finishing touch, fitting in beautifully with the overall appearance of the flush glass door. With its self-adhesive design, the KC 170 handle can be fixed easily and securely in place in no time with the help of the positioning template supplied.

## INDIVIDUAL ADJUSTMENT

The magnetic interaction allows the latching mechanism to be adjusted entirely to suit individual requirements. The holding power of the magnets – and therefore the level of effort required to open the door – can also be customised by changing the position of the magnets.

## KC LOCK – THE LOCKABLE HANDLE SOLUTION FOR GLASS DOORS

The innovative new locking solution combines maximum convenience with maintenance-free functionality and a minimalist design. The system is optimally designed for use in residential and heavy-duty doors such as office and practice rooms, and offers an intuitive, functional alternative to conventional door locks. The locking mechanism provides a single-sided locking solution without the inconvenience of keys, unwelcome locking cylinders or unsightly escutch-

eons. As a result, the attractive design of the door remains uncompromised. The KC Lock, comprising a KC 25 Lock closing magnet and KC 25/G Lock magnetic plate, is not only capable of being retrofitted to doors and frames, but it also blends in perfectly with the KC 170/1 Lock handle and functions entirely without current. The locking status can be observed from both sides of the door and the option of an emergency release is readily available.

**NEW**

lockable solution  
now available

# TECTUS® GLASS – THE ADVANTAGES AT A GLANCE

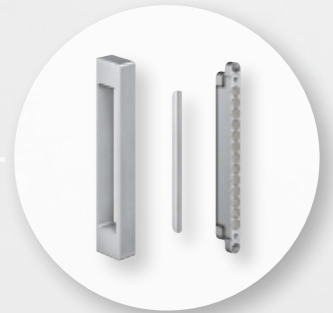
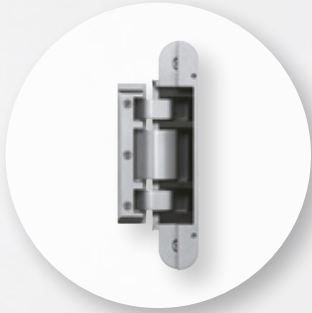
In addition to the all-new, flush glass door design and the silent latching mechanism, another huge advantage of TECTUS Glass is that no glass manipulation is required.

## PRODUCT FEATURES

- › for the very first time, the glass door, frame, hinge and latching system all sit flush in a single plane
- › load capacity of up to 80 kg
- › stable hinge kinematics for reliable and durable function
- › contactless and silent closing process (lockable options available)
- › suitable for 8–10 mm ESG-glass
- › continuous side and height adjustment
- › easy installation
- › for timber, steel and aluminium frames
- › Finishes: Satin Stainless Steel, Traffic White (similar to RAL 9016), Matte Deep Black (similar to RAL 9005), Matte Pure Grey (NCS S 8000-N), Satin Chrome Look (F1)

## KC Lock

- › for residential and heavy-duty doors
- › no locking cylinder or keys required
- › locking status visible on both sides
- › zero current
- › with emergency release function
- › suitable for retrofitting into door elements TECTUS Glass
- › design of handle KC 170/1 Lock corresponds in appearance and dimensions to KC 170



# THE MAGNETIC CLOSURE FOR TIMBER INTERIOR DOORS

SIMONSWERK has optimised its magnetic closures to come up with a striking solution that's even suitable for timber interior doors. Current-free, silent, wear-free and reliable, its technical features alone are sure to impress in every respect. But the most exceptional aspect of the magnetic closure is the unprecedented ease of use it affords when opening and closing timber doors.

It has never been so easy to open and close timber interior doors without making a sound. Without the conventional "push-pull-slide" motion, doors can be opened silently and with minimal ergonomic effort, too. The door is held in the closed position without making direct contact with the patented closing magnet. The holding power can be individually adjusted to anchor the door securely in its end position.

---

## DESIGN TIP

To create a minimalist impression, the magnetic closure can be hidden entirely from sight by attaching it to the upper edge of the door or to the cross member of the frame. This leaves the vertical edge of the door and frame free from unsightly elements without affecting the hinge in any way.

---

## GROUNDBREAKING INTERACTION

In combination with the magnetic plate KC 50/H, the closing magnet KC 50 is the perfect choice for timber block frames and casing frames and can even be used with rebated and flush doors alike. It is even possible to combine several magnets at once, if required – particularly in the case of extra-tall doors, for example. The matching handle KC 170 does not require any milling of the wood. The closing magnet, magnetic plate and handle are all coordinated to perfection and combine to create a set that is easy to install.





# TECTUS GLASS – PRODUCT OVERVIEW

## The TECTUS Glass hinge system



Note: 80 kg load capacity afforded through the use of special material components.

TEG 310 2D 60 – 60 kg load capacity

TEG 310 2D 80 – 80 kg load capacity

## The magnetic closure KC



**Handle**  
KC 170



**Magnetic Plate**  
KC 50/G



**Closing Magnet**  
KC 50

## FINISH OPTIONS BASED ON THE HANDLE KC 170



Stainless Steel Effect



Traffic White (similar to RAL 9016)



Matte Deep Black (similar to RAL 9005)



Matte Pure Grey (NCS S 8000-N)



Satin Chrome Look (F1)

**The magnetic closure KC Lock**



**Handle**  
KC 170/1 Lock

**Magnetic Plate**  
KC 25/G Lock

**Closing Magnet**  
KC 25 Lock

**The magnetic closure KC for timber doors**



**Closing Magnet**  
KC 50

**Magnetic Plate**  
KC 50/H  
block frame

**Magnetic Plate**  
KC 50/H FZ  
casing frame



**SIMPLE  
INSTALLATION**

Visit our website at [www.tectus-glass.com](http://www.tectus-glass.com) and discover how installation takes place without any need to manipulate the glass.



All of our products can be found in our **PRODUCTSELECTOR** at [www.simonswerk.com](http://www.simonswerk.com)

VISIT OUR PRODUCTSELECTOR AT  
[www.simonswerk.com](http://www.simonswerk.com)

**SIMONSWERK GmbH**

Bosfelder Weg 5  
33378 Rheda-Wiedenbrück  
Germany

☎ +49 (0)5242/413-0  
📠 +49 (0)5242/413-260

[sales@simonswerk.de](mailto:sales@simonswerk.de)  
[www.simonswerk.com](http://www.simonswerk.com)

